



# COMMUNITY CONNECTIONS

FROM THE OFFICE OF  
ASSEMBLY MEMBER

*Isaac G. Bryan*

## IN THE CAPITOL BRYAN'S BILLS

We have 17 bills still active in the Senate:

- Six bills will be taken up by the Senate Appropriations Committee in the coming weeks.
- Eleven bills are ready for a final vote on the Senate floor.

To learn more, search for bill info by author [HERE](#).

## IN THE DISTRICT WHAT WE DID

- ✓ Kicked off [Special Need Network's](#) annual summer camp
- ✓ Visited dedicated [SEIU 99 workers](#) at Little Sprouts Preschool
- ✓ Brought [young, Black scholars](#) from across CA for a week of enrichment at CSUDH
- ✓ Took a look at [permanent, supportive senior housing](#) with The People Concern

## Upcoming Events

### August is National Immunization Month

- 8/10 Paws For Life K9 Rescue Dog Adoption Event ([more info](#))
- 8/11 Olympic Ceremony Watch Party @ The Culver Steps ([more info](#))
- 8/14 LAUSD - First Day of Instruction  
Health Plan and Social Services Enrollment @ Community Resource Center ([more info](#))
- 8/15 LAPLxSawtelle Neighborhood Council Book Club (Zoom, [more info](#))
- 8/20 Are You On Track For A UC? Student Success Workshop @ Robertson Library ([rsvp](#))
- 8/21 CCUSD - First Day of Instruction
- 8/22 UCLA Mobile Eye Clinic @Westchester Library ([more info](#))
- 8/30 Back-to-School Free Vaccine Clinic @ Culver City Library ([register](#))  
Confidence & Conquering Your Job Hunt Workshop @ Palms-Rancho Library ([more info](#))
- 8/31 5th Annual Jazz Festival @ Leimert Park ([more info](#))



WLAC will host Registration Day Events from 9:00 am - 1:00 pm  
Saturday, August 10 ● Friday, August 16 ● Saturday, August 24

Reserve your spot



[Fiesta La Ballona](#) is coming soon to Veterans Memorial Park! The Parks, Recreation & Community Services Department looks forward to seeing you [August 23-25!](#)

# Important Notices

## KEEP KIDS COOLER AND SAFER IN HOT WEATHER

Children are one of the groups at greatest risk of heat illness, including kids with disabilities or those with chronic health conditions like asthma or diabetes, so it is important to take extra precautions to protect them during extreme heat.

1.

### Apply sunscreen & drink water.

Shield children's skin from harmful UV rays and encourage children to stay hydrated.

2.

### Dress for the heat.

Wear light-colored, lightweight, loose-fitting, and breathable clothes.

3.

### Limit outdoor activities.

Encourage kids to play indoors or in shaded areas during extreme heat.

4.

### Educate kids on heat safety.

Encourage them to seek help if they or their friends experience symptoms.

5.

### Plan errands with children in mind.

Never leave children alone in a parked car.



For more information or to create an extreme heat plan, visit [HeatReadyCA.com](https://HeatReadyCA.com).



Apply for a free gun lock today from the Office of Violence Prevention (OVP). Free of charge and no questions asked.

To secure a lock from OVP, please fill out the form below (limit of two locks per person).

### **Gun Lock Request Form**



## EXPUNGEMENT SERVICES AVAILABLE

The Los Angeles County Public Defender's Office offers expungement services. Youth and adults may be eligible to have prior arrests and/or old misdemeanor/felony convictions removed from their legal records and/or sealed from the general public. For more information, visit [pubdef.lacounty.gov](https://pubdef.lacounty.gov), or call (213) 974-1034.



## Who Do I Call for Help?

### 9-1-1

to report crimes, fires, and medical emergencies when law enforcement, firefighters, or paramedics are needed



### 800-854-7771

for crisis response teams in the field or mental health resources through the 24/7 LACDMH Help Line



### 9-8-8

for support with suicidal crisis or mental health-related distress



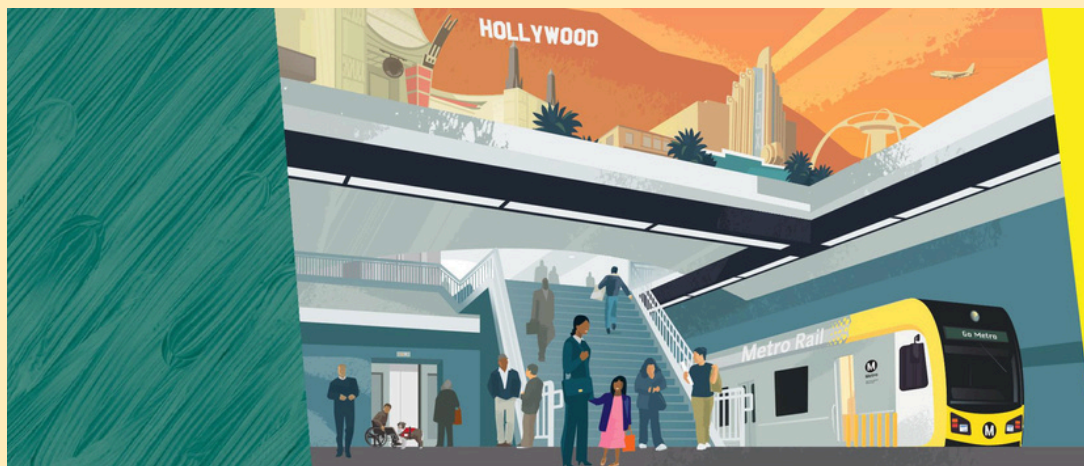
988 SUICIDE & CRISIS LIFELINE

### 2-1-1

for general information on local resources or linkages and referrals to health, human, and social services



# In the District



## K LINE NORTHERN EXTENSION

## We're planning rail to bridge divides.

### You're Invited!

Metro has a plan to make it easier to get around with the K Line Northern Extension (KNE) project. This project would extend the existing K Line north from the Metro E Line to the D and B Lines. It would close a major gap in the Metro Rail network and create opportunities by connecting the Crenshaw District, Mid-City, West Hollywood and Hollywood.

Metro released a Draft Environmental Impact Report (EIR) for the Metro K Line Northern Extension project on July 23, 2024, and is accepting public comments during the 45-day public review in support of the CEQA environmental review process. Metro invites you to attend our public hearings on August 10th, August 13th, and August 15th to provide comments on the Draft EIR and learn more about the project. Metro will also accept comments by mail, email, and phone.

Attend a public hearing or visit [metro.net/KNE](https://metro.net/KNE) to learn more about the project and provide your comments between July 23rd and September 5th.

### Public Hearing Dates

#### Saturday, August 10, 2024

Susan Miller Dorsey Senior High  
3537 Farmdale Ave, Los Angeles, CA 90016  
10:00 am - 12:00 pm

#### Tuesday, August 13, 2024

Pan Pacific Park Community Center  
7600 Beverly Blvd, Los Angeles, CA 90036  
6:00 pm - 8:00 pm

#### Thursday, August 15, 2024

12:00 pm - 1:30 pm  
Web Link: <https://uso2web.zoom.us/j/87336933668>  
Web ID: 8733693366  
Call-in Number: 213.338.8477

### Register Here!

Register at: [bit.ly/KNE2024](https://bit.ly/KNE2024)

or by scanning the QR code:



### CONTACT US

📞 213.418.3093  
✉️ [Klinenorth@metro.net](mailto:Klinenorth@metro.net)  
🌐 [metro.net/KNE](https://metro.net/KNE)



# In the District



## 2024 Summer Sunset Music Series

The free, family-friendly series runs every Thursday evening until August 29th from 7 PM to 9 PM each week at the Culver Steps.

- **August 8 - Local Party - Rock & Pop**  
Eliza Spear  
Kicking Giants  
The Rusties
- **August 15 - World Music Discovery**  
Sadubas  
(KCRW) Jeremy Sole's World Music Discovery
- **August 22 - Afro Cuban**  
Ricardo Lemvo & Makina Loca
- **August 29 - ROCKnSOUL Party**  
Tom Kenny & The Hi-Seas



### What's New?

- **User-Friendly Design:** Easily find all the recycling information you need.
- **Resource Center:** Discover comprehensive guides, handy tips, and answers to your recycling questions.
- **Helpful Links:** Find links to current refuse rates, bin replacement requests, where to drop off hazardous materials, and much more.
- **Community Engagement:** Stay in the loop with the latest recycling news and events in our community.

[Check Out the New Website!](#)

*We believe that small actions can lead to big changes. Together, we can make Culver City a greener place to live.*

Culver  
CITY

## Registration for Culver City's Parks, Recreation & Community Services (PRCS) fall recreation programs



## Fall into PRCS!

## Culver City Living Fall Recreation Guide – Out Now!

[See the Fall Guide Here.](#)



## Fall/Winter Baseball & Softball Leagues



Sign up for LA City's softball or baseball leagues for [adults & seniors](#).



Upcoming Board of Supervisors' meeting dates and agendas can be found [here](#).



# Resources



Opening Doors...

## Metropolitan's Apprenticeship Program

Metropolitan's Apprenticeship Program is for mechanical and electrical technicians. It provides journey-level skills training using a combination of structured on-the-job experiences as well as related lectures and labs.

### Program Details

The four-year program is led by two full-time instructors and certified by the California State Division of Apprenticeship Standards. It is divided into eight, six-month learning segments, which includes a six-month probationary period. Apprentices are paid throughout the program and considered employees of Metropolitan, eligible for benefits. They learn in a classroom setting for two to three days per month. Veterans Affairs GI Bill benefits are available. At graduation, participants will earn a journey-level certificate with 36 hours of college credits applicable towards an associate's degree in Applied Sciences and the offer of a full-time job at Metropolitan.

### Qualifications

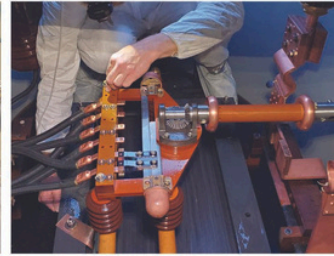
To qualify, applicants must be 18 years old at the time of the application, with a high school diploma, GED or other equivalent test. A valid drivers' license is required.

### Compensation

Starting salary is \$21.28 per hour, with pay increasing approximately every six month once training milestones are met. The graduate pay rate is expected to be \$45.94/hour.

### Job Locations

Apprentices are assigned to work locations throughout Los Angeles, Orange, Riverside and San Bernardino counties. Classroom instruction takes place at a training facility at Diamond Valley Lake near Hemet in Riverside County. Time and travel to this facility is paid.



### More Information

Email: [Apprenticeprogram2@mwdh2o.com](mailto:Apprenticeprogram2@mwdh2o.com)

Visit us: [mwdh2o.com/apprenticeships-internships/](http://mwdh2o.com/apprenticeships-internships/)



## STEP INTO TECH: A Pathway Forward

### INTERESTED IN A CAREER IN TECH?

Register for UNITE-LA's Step into Tech: A Pathway Forward program.

Register at [bit.ly/SITFall2024](http://bit.ly/SITFall2024)



In partnership with:



Thank you to our workforce development funders:

Anthony and Jeanne Pittaker  
Family Foundation  
Avartus  
Bank of America Foundation  
Boeing  
California Department of Health Care  
Access and Information

California Workforce Development Board  
The Carol and James Seltzer Foundation  
Children's Hospital Los Angeles  
City of Los Angeles  
City of Los Angeles Economic &  
Workforce Development Department  
Daight Stuart Youth Fund

Edison International/SoCal Edison  
Farmers Insurance Charitable Giving  
Foundation for California  
Community Colleges  
Google  
Green Foundation  
JP Morgan Chase & Co.  
Los Angeles Regional Consortium

The Ralph M. Parsons Foundation  
Southern California Gas Company  
State of California Employment  
Development Department

### FALL PROGRAM DATES AND TIMES:

Sept. 17 to Oct. 24, 2024  
Tuesdays and Thursdays  
10 a.m. to noon

### PROGRAM REQUIREMENTS:

- Justice-involved/impacted individuals
- Ages 18-35

### LEARN MORE AT AN UPCOMING INFO SESSION:

Aug. 22 at 10 a.m.

[bit.ly/SITFall2024InfoSession82](http://bit.ly/SITFall2024InfoSession82)



For more information, contact  
Ilia Lopez at [ilopez@unitela.com](mailto:ilopez@unitela.com).

## Paid Parent Leadership Opportunity!

Parents and guardians of LA County K-12 students are invited to become a Parent Ambassador Leader (PAL)!

PALs will...

- **LEARN** how to support student health and success at school
- **SHARE** resources, present information learned, plan and coordinate activities that support PALs core topics
- **GET PAID** for the work they do at schools with a \$550 gift card!



### Program Requirements

- School support and approval from the school administrator
- 20-hour time commitment

### How do interested PALs apply?

- Complete the online application located here <https://bit.ly/3xdx15y>

For additional information or assistance regarding the PALs program, please contact:

[TK12Ambassador@ph.lacounty.gov](mailto:TK12Ambassador@ph.lacounty.gov)



12/1/23





## Help Me Grow LA is Hiring Family Partners!

### FAMILY PARTNER ROLE

- Support and partner with parents as they navigate systems and services for children with special needs
- Provide information, referral, technical assistance, and training for parents of children with special health needs
- Recruit parent leaders for the Parent-to-Parent program and promote the development of emerging parent advocates and leaders

### JOB REQUIREMENTS

- Lived experience parenting a child with special needs, disabilities, or chronic illness
- Two years of experience as a parent representative, parent advocate or parent leader in a human or health service program serving children or families.
- Excellent interpersonal, written and verbal communication skills
- Empathy for families from diverse race/ethnic backgrounds and experiences
- Ability to establish trust with partners across different sectors serving families
- Valid Class C California Driver's License or the ability to utilize an alternative method of transportation

### IT'S ALSO HELPFUL IF YOU HAVE:

- Experience with early identification and intervention
- Experience with data entry, data collection, and/or record keeping using software
- Experience providing culturally affirming support to individuals communities who are from the various cultures/ethnicities prevalent in LA County, including those most impacted by health disparities, such as African American and Native communities.
- Fluency in English and another language (e.g., Arabic, Armenian, Cambodian, Cantonese/Mandarin, Farsi, Korean, Russian, Spanish, Tagalog, and Vietnamese). Fluency in multiple languages is not a required qualification.

### APPLY NOW--CLICK HERE!

[bit.ly/lafamilypartner](https://bit.ly/lafamilypartner)



**Part-time position (20 hours/week)**



**Flexible shifts**



**Salary: \$24.70/hr**



**Benefits: Sick time accrual**



**Location TBD in a Service Planning Area**

It is the policy of the County of Los Angeles to provide equal employment opportunity for all qualified persons, regardless of race, color, religion, sex, national origin, age, sexual orientation or disability.

Help Me Grow LA is a collaboration between:



Rev 8/8/23

### TENANT RIGHT TO COUNSEL ORDINANCE APPROVED: WHAT YOU NEED TO KNOW



The LA County Board of Supervisors recently approved the Tenant Right to Counsel Ordinance. This groundbreaking ordinance will offer free legal representation to eligible tenants facing eviction in unincorporated Los Angeles County starting in January 2025. This initiative will expand the Stay Housed LA program which provides tenants with important information and resources to help keep them in their homes. Administered by DCBA, the program helped more than 3,500 tenant households last year.

If you or someone you know is facing eviction, Stay Housed LA is here to help. Learn more at [stayhousedla.org](http://stayhousedla.org) or call 888-694-0040.

### IN-PERSON: Eviction Defense: Help Using Tenant Power Toolkit to Answer Eviction Complaints

Friday, August 9: 9:30 am - 12:30 pm

Have you been served with eviction paperwork (a Summons and a Complaint-Unlawful Detainer)? You may only have five days to respond! At this clinic, attendees seeking assistance with answering an unlawful detainer (eviction) complaint will be guided through the Tenant Power Toolkit ([www.tenantpowertoolkit.org](http://www.tenantpowertoolkit.org)) to complete the necessary court forms.

Reserve Your Spot



Pay by  
Sept 30  
to avoid  
late fees!

## Registration for the LA County Rent Registry is Open Now

- ✓ Register online or in person
- ✓ Pay online, in person, or by mail

Owners of Rental Properties and Mobilehome Parks in unincorporated LA County must register rental properties annually. Owner-occupied homes are exempt from registration.

2024-25 Registration Period:  
**July 1 - September 30, 2024**

More Info:  
[dcba.lacounty.gov/rentregistry](http://dcba.lacounty.gov/rentregistry)

U.S. DEPARTMENT OF HOUSING AND URBAN DEVELOPMENT

# OCIO

## SLAM the SCAM: Fraudulent Section 8 Assistance Advertisements

OFFICE OF THE CHIEF INFORMATION OFFICER

Fraudulent Section 8 assistance ads are appearing on social media sites in increasing numbers. These sites direct members of the public to a fraudulent website, which harvests personal information and data. **The flyer and website 'www.govassistance[dot]org' are NOT legitimate.** Individuals who fall victim to this or similar scams can file a complaint at the Internet Crime Compliant Center (IC3). Additionally, if someone reaches out to you about a scam involving HUD, please reach out to our Computer Incident Response Team.





Advancing Economic Justice  
& Equity for Women

## P.A.I.D PREGNANCY ASSISTANCE INCOME WITH DIGNITY



Join the Guaranteed Income Movement!

The Pregnancy Assistance Income with Dignity (P.A.I.D) program provides direct cash assistance to pregnant people.

P.A.I.D will provide 180 randomly selected pregnant people with \$1,000/month of unconditional supplemental income for 18 months.

### ELIGIBILITY REQUIREMENTS

- In your 1st or 2nd trimester (before the end of 27th week) of pregnancy at time of enrollment
- Reside in Los Angeles County
- Have a combined household income equal to or less than HUD's low income threshold
- Must be 18 years or older

**APPLICATION WILL OPEN APRIL 8, 2024.**  
PLEASE REACH OUT TO OUR GUARANTEED INCOME  
TEAM TO LEARN MORE OR TO APPLY.

(323) 852-8500 EXT. 652  
PAID@NCJWLA.ORG



**Learn More**

[www.ncjwla.org/paid](http://www.ncjwla.org/paid)

## ATTENDANCE

in the early grades



### Who Is Affected

Kindergarten and 1st grade classes often have absenteeism rates as high as those in high school. Many of these absences are excused, but they still add up to lost time in the classroom.

1 in 10 kids

in kindergarten and 1st grade are chronically absent. In some schools, it's as high as 1 in 4.<sup>1</sup>



2 in 10 low-income kids miss too much school. They're also more likely to suffer academically.<sup>1</sup>



2.5 in 10 homeless kids are chronically absent.<sup>2</sup>



4 in 10 transient kids miss too much school when families move.<sup>2</sup>



<sup>1</sup> Chang, Hedy; Romero, Mariajose. Present, *Engaged and Accounted For: The Critical Importance of Addressing Chronic Absence in the Early Grades*, National Center for Children in Poverty: NY: NY, September 2008.

<sup>2</sup> Chronic Absence in Utah, Utah Education Policy Center at the University of Utah, 2012.

### Why It Matters

If children don't show up for school regularly, they miss out on fundamental reading and math skills and the chance to build a habit of good attendance that will carry them into college and careers.

Preliminary data from a California study found that children who were chronically absent in kindergarten and 1st grade were far less likely to read proficiently at the end of 3rd grade.

Who Can Read on Grade Level After 3rd Grade?<sup>3</sup>



64%

of kids with good attendance in K and 1st (missed 9 or fewer days both years)



43%

of kids with at-risk attendance (missed more than 9 days both years)



41%

of kids chronically absent in K or 1st (missed 18 or more days one year)



17%

of kids chronically absent in K and 1st (missed 18 or more days both years)

<sup>3</sup> Attendance in Early Elementary Grades: Association with Student Characteristics, School Readiness and Third Grade Outcomes, Applied Survey Research, May 2011.

## 2024 Back to School Resources & Tips



### Plan Ahead for Good Attendance

- Create a morning routine to avoid being late to school!
- If students are having problems at school, talk to teachers or counselors as soon as possible.
- Stay positive about learning & going to school --it makes a big difference!
- Schedule appointments, such as vaccine and routine immunization appointments ahead of time.
- Create a Student Attendance Success Plan with [My Family's Help Bank](#)

### Tutoring & Homework Help

[Free Online Tutoring \(LA Public Library\)](#)

[Student Zone - After-School Homework Centers \(LA Public Library\)](#)

[Brainfuse - Free Online Tutoring \(LA County Library\)](#)

### Support Services

LAUSD

Student & Family Wellness Hotline - Help with mental health, immunizations, health insurance, food, housing, and more. Call 213-241-3840, M-F 8am-5pm.

Students Services for Foster Youth - [Click Here](#)

Students Experiencing Homelessness - [Click Here](#)

LGBTQ Support - [Click Here](#)

CCUSD

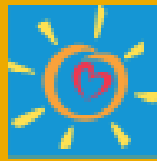
Family Resources - Resources for food, housing, clothing, medical, mental health, supplies, LGBTQ+ support, and more. [Click Here](#)

Culver Closet - Provides CCUSD students and families with a private appointment to access free clothing, shoes, toiletries, school supplies and other basic supplies. Call 310-842-4200 ext. 3600 to schedule.



Get Connected! Find low-cost internet plans by zip code at [Internet For All Now](#)





LA Care



## Community Resource Center

**FREE** diapers & baby wipes at our center! Stop by monthly and stock up on essentials for your little one. Give us a call for more details.

### CENTER HOURS

MONDAY - FRIDAY FROM 9AM - 5PM  
CALL US AT 310-231-3854

If you have any questions, please call us at **310.231.3854** or visit [www.communityresourcecenterla.org](http://www.communityresourcecenterla.org).

### See **YOU** in School!



## UNIVERSAL TRANSITIONAL KINDERGARTEN

UTK is available for free to all children who will have their 4th birthday on/by September 1 of the school year.

How do I enroll my child in Universal Transitional Kindergarten (UTK)?

- 1 Find your school of residence: <https://explorelausd.schoolmint.net/school-finder/home>
- 2 Contact your school of residence and pick-up an enrollment packet.
- 3 Another option is to complete an online enrollment packet: <https://enroll.lausd.net/>



CULVER CITY  
UNIFIED SCHOOL DISTRICT

## TK/Kindergarten Information

### 2024-2025 School Year

- Children turning 5 on or before September 1, 2024 - eligible for Kindergarten
- Children turning 5 five between September 2, 2024 and June 2, 2025 - eligible for TK

**Learn more and register HERE.**