



# COMMUNITY CONNECTIONS

FROM THE OFFICE OF  
ASSEMBLY MEMBER

*Isaac G. Bryan*

## IN THE CAPITOL

### BRYAN'S BILLS

May is a busy month in the Capitol. Each legislative house (Senate and Assembly) finished up voting on their own bills. All the bills that made it this far will now be sent to the other house for a second round of committee hearings and votes.

Our bills moving on to the Senate include: AB [1816](#), [1686](#), [1816](#), [1685](#), [1848](#), [1913](#), [2159](#), [2419](#), [1798](#), [1735](#), [1823](#)

## IN THE DISTRICT

### WHAT WE DID

- ✓ Bans Off Our Bodies Rally
- ✓ Special Needs Network Conference
- ✓ Initiate Justice Town Hall
- ✓ iFoster Event
- ✓ Student Success Week at UCLA
- ✓ New Earth Gala
- ✓ Climate Equity Panel
- ✓ Palms Neighborhood Block Party
- ✓ Westwood Connect Day

## Upcoming Events

### LGBTQ+ Pride Month ([Info](#))

- 6/1 Fiesta La Ballona Committee Regular Meeting ([Meeting Info](#))
- 6/1-6/18 Architectural Exhibition at Helms Design Center, Free ([Info](#))
- 6/7 *California Primary Election – Vote!* ([Info](#))
- 6/9 Convo With A Councilmember, Göran Eriksson ([Event Info](#))
- 6/13 Culver City City Council Meeting ([Meeting Info](#))
- 6/14 West LA Commons: Public Scoping Meeting ([Meeting Info](#))
- 6/16 Bicycle & Pedestrian Advisory Committee Meeting ([Meeting Info](#))  
*OneLA Small Business Procurement Event* ([Event Info](#))  
LAUSD Family and Community Engagement Meeting ([Meeting Info](#))
- 6/17 Juneteenth 2<sup>nd</sup> Annual Celebration & Resource Fair ([Event Info](#))
- 6/18 *Leimert Park Juneteenth Celebration* ([Event Info](#))  
Neighborhood Council Budget Day ([Event Info](#))
- 6/19 *The Peoples Juneteenth 2022* ([Organizer](#))
- 6/20 Juneteenth ([Holiday Info](#))

# Los Angeles County COVID-19 UPDATE



Published May 23, 2022

With Significant Increases in Transmission and Outbreaks at High-Risk Settings, Getting Boosted Should be a High Priority for Residents and Workers - 12,378 New Positive Cases and 14 New Deaths Due to COVID-19 in Los Angeles County Since Saturday ([lacounty.gov](http://lacounty.gov))

**COVID-19 DAILY UPDATE**

**Los Angeles County\***  
May 23, 2022

<b>2,476 NEW CASES</b>	2,942,149 CASES TO DATE
<b>7 NEW DEATHS</b>	32,086 DEATHS TO DATE
<b>391 CURRENTLY HOSPITALIZED</b>	
<b>3.0% TODAY'S POSITIVITY RATE</b>	

\*Includes Long Beach and Pasadena Health Departments  
publichealth.lacounty.gov/coronavirus

## COVID-19 BOOSTERS ARE NOW AVAILABLE TO KIDS 5-11

5-11 year-olds are eligible only for a Pfizer booster five months after their 2nd dose.

For more information and to find a location near you, visit [VaccinateLACounty.com](http://VaccinateLACounty.com)

### Locations are open for walk-ins

<p><b>Market Street Center</b> 22900 Market St. Santa Clarita Wed - Sun 12:00 PM - 7:00 PM</p> <p><b>Balboa Sports Complex</b> 17015 Burbank Blvd Wed - Sun 11:00 AM - 6:00 PM</p> <p><b>Palmdale Oasis Park Recreation Center</b> 3850-A East Avenue S Wed - Sun 12:00 PM - 7:00 PM</p> <p><b>Obregon Park</b> 4021 E 1st Street Wed - Sun 11:00 AM - 6:00 PM</p>	<p><b>Commerce Senior Citizens Center</b> 2555 Commerce Way Wed - Sun 11:00 AM - 6:00 PM</p> <p><b>Ted Watkins Memorial Park</b> 1335 E 103rd St Wed - Sun 11:00 AM - 6:00 PM</p> <p><b>Norwalk Arts &amp; Sports Complex</b> 13000 Clarkdale Avenue Wed - Sun 11:00 AM - 6:00 PM</p>
--	---

Visit [VaccinateLACounty.com](http://VaccinateLACounty.com) for more information or call 833-540-0473 to request homebound service or a ride to your appointment.

# In the District



NEIGHBORHOOD COUNCILS  
**EMPOWER LA**  
Department of  
NEIGHBORHOOD EMPOWERMENT



Neighborhood Councils are the closest form of government to the people. They are advisory bodies, who advocate for their communities with City Hall on important issues like development, homelessness, and emergency preparedness.

Neighborhood Councils are part of the Los Angeles City government, and have annual budgets funded by taxpayer dollars.

Neighborhood Council board members are City officials who are elected by the members of their local communities, but they donate their time as volunteers. The Neighborhood Council system was established in 1999 as a way of ensuring that the City government remains responsive to the different needs and lifestyles of Los Angeles' rich variety of communities. There are currently 99 Neighborhood Councils in Los Angeles, each serving about 40,000 people.

To find your Neighborhood Council please enter your address [HERE](#)

## Statewide Map of Free Food Resources That are Available in California



L.A. Controller Ron Galperin just released this new statewide map of free food resources available to Californians. This is the only resource of its kind in California and shows more than 1,400 food banks, food pantries, emergency distribution centers, and other community resources providing free access to food across the state.

[Free Food in California map!](#)

Please click [here](#) to learn more about how this essential resource came to be.

*Culver* CITY

### Neighborhood Council Links

[Culver Crest Neighborhood Association](#)



[Rancho Higuera Neighborhood Association](#)

Lindberg Park  
Neighborhood  
Association

## State Tenant Protections Update

AB 2179 extends State protections until **June 30 only for tenants who have applied for emergency rental assistance**. If you're a tenant in LA County\*, you must pay rent or risk being evicted starting April 1.

Learn more at [DCBA.lacounty.gov/noevictions](https://dcba.lacounty.gov/noevictions).

\*Some cities still have non-payment of rent protections

**AB 2179 EXTENDS STATE PROTECTIONS THROUGH JUNE 30 ONLY FOR PEOPLE WHO HAVE APPLIED FOR EMERGENCY RENTAL ASSISTANCE**

If you're a tenant in LA County\* you must pay rent or risk being evicted beginning April 1.



\*SOME CITIES STILL HAVE NON-PAYMENT OF RENT PROTECTIONS

LEARN MORE:  
[DCBA.LACOUNTY.GOV/NOEVICTIONS](https://dcba.lacounty.gov/noevictions)



# Resources



The Los Angeles Public Library has partnered with TurboVote to make sure you always know when elections are happening, and have the information you need to vote. Sign up to receive election reminders, get registered to vote, and apply for your absentee ballot.

[Voting | Los Angeles Public Library \(lapl.org\)](https://www.lapl.org/voting)

Eligible small businesses can connect with free legal experts who can provide help ranging from basic legal information to negotiating agreements related to debt, assistance with IPs and more. [Visit here](#) to learn more or to determine eligibility

## Know Your

Get FREE legal support for your small business.  
Visit [lategalhelp.org](https://www.lategalhelp.org).



Sometimes those living with Alzheimer's, dementia or autism go missing. Three years ago, LA County launched LA Found and Project Lifesaver to provide those at risk of wandering with free voluntary trackable bracelets.

Since then, we've distributed 905+ Project Lifesaver bracelets with 26 successful rescues throughout LA County! Call (833) 569-7651 or visit [lafound.lacounty.gov](https://lafound.lacounty.gov) to learn more about this amazing program.

**Keep your loved one safe.**  
Apply for a bracelet from Project Lifesaver.

**L.A. FOUND**

Apply now at [lafound.lacounty.gov](https://lafound.lacounty.gov)

**The Office of Immigrant Affairs (OIA) and Office of Emergency Management have developed a web hub to share important information for those impacted by the conflict in Ukraine. Visit [Support for Ukrainian Immigrants - Office of Immigrant Affairs \(lacounty.gov\)](#) for more information.**

The time is now to lend your voice, reimagine our local criminal justice system, and influence how \$100 million in public funds are allocated. Long term community economic disinvestment has disproportionately impacted communities of color in LA County for far too long. The Care Fist Community Investment (CFCI) Committee wants to reinvest and transform LA County and achieve equity for all residents.

Take part in CFCI's community engagement process and have a say in how county funds are spent by completing a project recommendation form, taking part in a survey, or joining a future listening session.

For additional information, [visit here](#).

Our newly created Economic and Workforce Development branch has partnered with PPE Unite to distribute free personal protective equipment (PPE) to local small businesses, non-profits, and social enterprises.

Businesses can get free supplies of N95s, 3ply surgical masks, and hand sanitizer to be [safer at work](#). Head over to [PPE Unite](#) and stock up today while supplies last. [Visit here](#) to learn more about the updated LA County Health Officer Order



The County of Los Angeles through the offices of Immigrant Affairs and Emergency Management are providing information and assistance to family, friends, and loved ones in LA County impacted by the war in Ukraine

LA County Office of Immigrant Affairs  
(800) 593-8222  
immigrantaffairs@dca.lacounty.gov  
immigrants.lacounty.gov

## GET INVOLVED IN THE CFCI COMMUNITY ENGAGEMENT ACTIVITIES



SUBMIT YOUR PROGRAM OR PROJECT IDEAS



TAKE A COMMUNITY SURVEY



ATTEND A COMMUNITY LISTENING SESSION



**SUPPORT**  
**SMALL BUSINESS.**  
*please* **SHOP**  
**SAFELY**



SAFER  
at WORK  
LOS ANGELES

**THE LOS ANGELES REGIONAL INITIATIVE FOR SOCIAL ENTERPRISE** The Los Angeles Regional Initiative for Social Enterprise (LA:RISE) provides career services, on-the-job training and supportive services to persons affected by homelessness. LA:RISE is here to assist those looking for employment. Learn more at [LA:RISE - REDF](#).

LA, we're all going through the current crisis together. To help you weather this storm, Headspace and the LA County Department of Mental Health have partnered to provide support and resources during this challenging time.

Sign up to access meditations, as well as sleep and movement exercises, designed to help you care for your mind — all free. You can also scroll down to explore a special collection curated for LA. Because when we take care of ourselves, everyone shines.

[LA County is stronger together - Headspace](#)  
[Ver esta página en español](#)

Start a program:

[lacounty.iprevail.com](http://lacounty.iprevail.com)

Are you a student? Click [here](#)

Are you a Veteran? Click [here](#)



LOOKING FOR WORK?



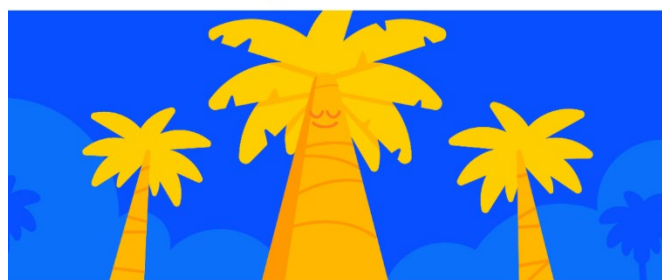
Are you unemployed or underemployed and living in Los Angeles County? Are you having a tough time finding a job because you've been homeless, incarcerated, struggled with addiction or have limited education? LA:RISE can help!

Give us a call to learn more! 1-888-4-LARISE (452-7473)



LOS ANGELES COUNTY  
DEPARTMENT OF  
MENTAL HEALTH  
hope. recovery. wellbeing.

 headspace



LA County is stronger  
together

## Help is available 24/7

iPrevail is designed to help build resilience and identify and overcome unique challenges. If you or someone you know is having difficulty coping with the added stress, the Los Angeles County Department of Mental Health can provide additional support at any time.

Providing a free  
network of support for  
LA County.

Get the support you deserve! Click below to get started.

Are you a student? Click [here](#)

Are you a Veteran? Click [here](#)

[Start a Program](#) [Connect with a Coach](#)





**Great news if you have you been disqualified from Medi-Cal due to having excess property! Effective July 1, 2022, increases to property asset limits means you may be eligible to Medi-Cal. Review Medi-Cal eligibility at [Health Care \(lacounty.gov\)](https://www.lacounty.gov/health-care).**



**KEEP YOUR PROPERTY AND STILL QUALIFY FOR MEDI-CAL.**

Beginning July 1, 2022, changes to the asset limits may mean that you will be able to have more assets and still qualify for Medi-Cal.

Ask a Customer Service Representative or call 1-866-613-3777 to find out if you qualify or to get more information.

[dpss.lacounty.gov](https://dpss.lacounty.gov)



## GET 90 DAYS OF FREE RIDES WITH METRO DISCOUNTS

**It's easier than ever to apply for the Metro Low-Income Fare is Easy (LIFE) Program for reduced fares for CalFresh and Medi-Cal households. Sign up now for a FREE 9-day pass at [LIFE Program Application \(taptogo.net\)](https://www.lacounty.gov/life-program-application) or visit [Low-Income Fare is Easy \(LIFE\) - LA Metro](https://www.lacounty.gov/low-income-fare-is-easy) for more information.**

**Get 90 days of free rides.**

A little help can go a long way. So we've made it easier to enroll in Metro's LIFE Program. Sign up now and get 90 days of free rides. Visit [metro.net/life](https://metro.net/life) to get started.



Metro bus fare collection resumes January 10, 2022.

## CALFRESH MARKET MATCH PROGRAM

CalFresh benefits are worth more at local farmers markets with Market Match! When people use their CalFresh nutrition benefits at farmers' markets and other farm-direct outlets, Market Match provides matching funds so that they can buy even more fruits and vegetables. For example, a shopper who spends \$10 of CalFresh benefits at a farmers' market will receive an additional \$10 to spend on fresh produce, for a total of \$20. Visit the Market Match Program page to learn more or to view the diverse group of committed Market Match partners



**Double your CalFresh dollars with Market Match at participating farmers' markets!**


Visit <https://ecologycenter.org/fmfinder/> to find a farmers' market near you.

[dpss.lacounty.gov](https://dpss.lacounty.gov)



## DPSS RENEWAL LINE

**Need to renew your benefits or complete your Semi-Annual Report (SAR 7)? Call 1-888-999-7671 to renew your CalWORKs cash and CalFresh food benefits, and complete your SAR 7. Help is available Monday – Friday from 8 a.m. – 5 p.m. Visit [Department of Public Social Services \(lacounty.gov\)](https://www.lacounty.gov) for more information**




**DPSS RENEWAL LINE**  
NEED TO RENEW YOUR BENEFITS?

**CALL 888-999-7671**

**TO:**

- Renew CalFresh food benefits.
- Renew CalWORKs cash benefits.
- Complete the Semi Annual Report (SAR 7)

**Help is available Monday - Friday, 8am - 5pm.**

[dps.lacounty.gov](https://dps.lacounty.gov) 

## WorkSource Centers

EWDD currently operates 16 WorkSource Centers and 3 portal offices located throughout Los Angeles. These centers act as your personal employment agency and our services are always FREE. Our services are offered to adults, dislocated workers, veterans, the homeless and the re-entry population.

Centers also offer a variety of free services to local businesses and entrepreneurs.

WorkSource Centers offer assistance in multiple languages, including Armenian, Farsi, Korean, Russian, Spanish and Tagalog. Find your local Center on our [WorkSource Locations Map](#)



**EWDD**  
JOBS.YOUTH.BUSINESS.



 **LOS ANGELES**

## Internet Discount Available

**Affordable Connectivity Program (ACP)** can help eligible households reduce their monthly internet bill up to \$30 (\$75 for households on qualifying Tribal lands). These households are also eligible for a one-time \$100 discount when buying a laptop or tablet from participating providers.

The ACP eligibility and application process has been streamlined to make it easy for qualified households to start saving on their internet bill as soon as possible. To learn more about ACP and fill out an application, please visit: <http://www.internetforallnow.org/applytoday> or call 866-937-3810.

Get **\$30/mo** off  
Fast Home Internet  
**Affordable  
Connectivity  
Program**

